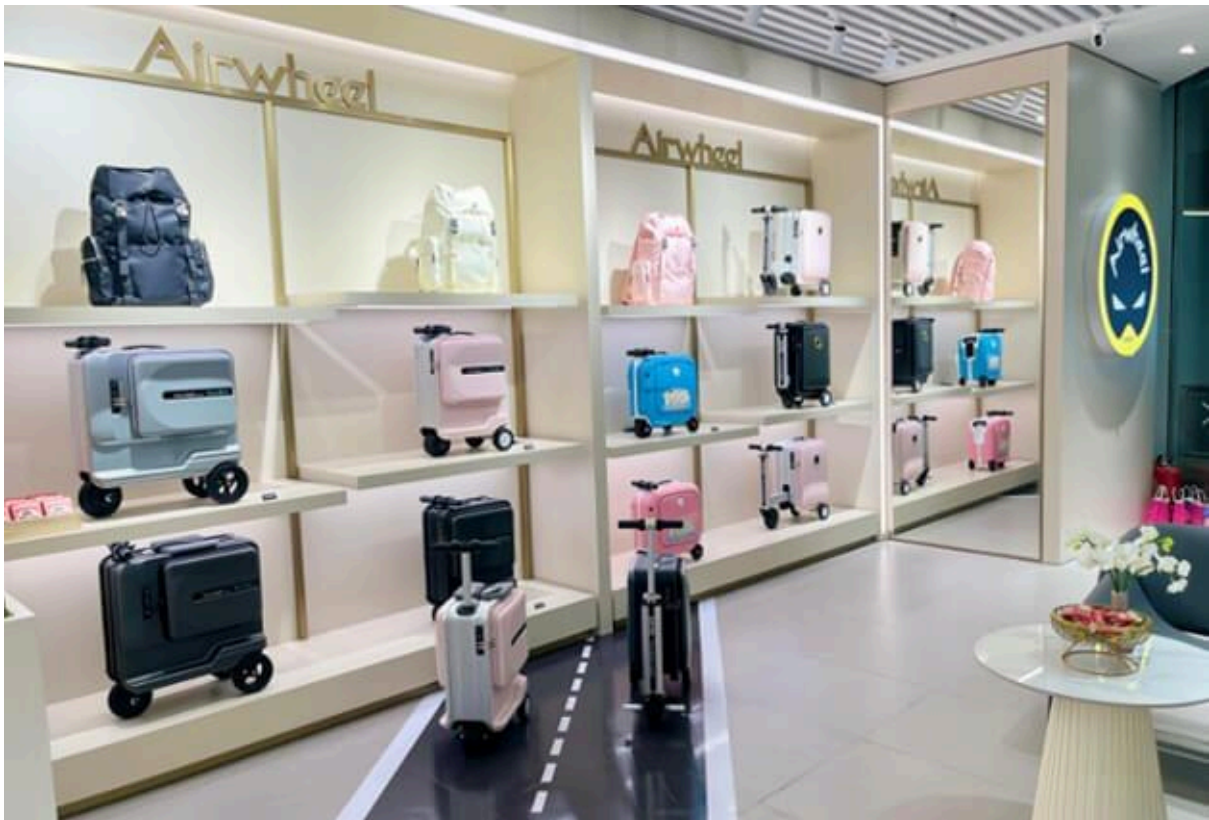


Upgrade Your Travel Experience With a 20inch Suitcase Built for Smart Mobility

Modern air travel is all about speed, convenience, and comfort. From navigating security lines to rushing between boarding gates, the right luggage can make a noticeable difference. A well-designed **20inch Suitcase** that functions efficiently as **boarding luggage** and a dependable [airport suitcase](#) has become an essential part of stress-free travel. With innovation leading the way, the **electric suitcase** is redefining how travelers move through airports.



Why a 20inch Suitcase Is the Preferred Carry-On Choice

A **20inch Suitcase** is widely accepted by airlines as cabin-friendly luggage, making it ideal for short trips and business travel. Its compact size allows it to fit easily into overhead compartments while still providing enough space for essential belongings. Travelers appreciate this size because it eliminates waiting at baggage claim and reduces the risk of lost luggage. As a carry-on solution, a 20inch suitcase delivers the perfect balance between portability and storage capacity.

Boarding Luggage That Keeps Travel Efficient

Efficient **boarding luggage** allows travelers to move smoothly from check-in to takeoff. Carry-on luggage saves time, avoids additional fees, and keeps personal items close during the flight. Modern boarding luggage is designed with lightweight materials and strong frames to handle frequent travel demands. With organized interiors and easy handling, boarding luggage ensures a seamless transition from the airport terminal to the aircraft cabin.

Airport Suitcase Designed for Busy Terminals

An **airport suitcase** must perform well in fast-paced and crowded environments. Long corridors, security checks, and gate changes require luggage that moves effortlessly. High-quality wheels, balanced weight distribution, and ergonomic handles contribute to smooth navigation. A reliable airport suitcase minimizes physical strain and allows travelers to focus on their journey instead of managing heavy bags.

Electric Suitcase: The Next Step in Travel Innovation

The [electric suitcase](#) represents a major advancement in luggage design. By integrating motorized mobility into a compact suitcase, travelers can move faster and with less effort. Electric suitcases are especially beneficial in large airports where walking long distances can be tiring. This innovative design transforms a traditional airport suitcase into a smart travel companion that supports modern travel lifestyles.

How an Electric Suitcase Enhances Mobility

An **electric suitcase** provides flexibility by functioning as both standard luggage and a powered mobility solution. With smooth acceleration and intuitive controls, it allows travelers to glide through terminals effortlessly. When the electric feature is not required, the suitcase can be handled manually like traditional boarding luggage. This dual functionality makes electric suitcases practical for a wide range of travel situations.

Smart Storage in a 20inch Suitcase

Storage efficiency remains a priority for travelers choosing boarding luggage. A thoughtfully designed **20inch Suitcase** includes compartments that help organize clothing, documents, and electronic devices. Even with built-in electric components, modern designs maximize internal space without compromising weight or balance. Smart storage solutions make packing easier and ensure quick access to essentials during the journey.



Airport Suitcase Safety and Airline Regulations

Compliance with airline regulations is essential, particularly for electric luggage. Most electric suitcases are designed with removable battery systems that meet aviation safety standards. This allows travelers to carry their suitcase onboard with confidence. A regulation-friendly airport suitcase ensures smooth security checks and eliminates concerns about airline restrictions, making it suitable for both domestic and international flights.

Why Electric Suitcases Are Becoming More Popular

The popularity of the **electric suitcase** continues to grow as travelers seek smarter and more efficient solutions. With airports expanding and travel frequency increasing, mobility has become just as important as storage. Electric suitcases offer a modern approach to travel by reducing physical effort and enhancing overall convenience. For frequent flyers, this innovation significantly improves the airport experience.

Choosing the Right Boarding Luggage for Your Travel Needs

Selecting the right [boarding luggage](#) depends on travel style and frequency. A durable **20inch Suitcase** is ideal for short trips, while an electric suitcase offers added value for travelers who often navigate large airports. Features such as build quality, maneuverability, and smart technology should guide the decision. The right airport suitcase enhances comfort and efficiency throughout the journey.

The Future of Airport Suitcases

As travel continues to evolve, luggage design is adapting to meet new expectations. The combination of compact sizing, intelligent features, and electric mobility defines the future of airport suitcases. Travelers now have access to luggage that not only carries belongings but

also supports movement and convenience. This shift reflects the growing demand for smarter travel solutions.

Final Thoughts on Smart and Electric Travel Luggage

A modern **20inch Suitcase** used as boarding luggage provides unmatched practicality for air travelers. When combined with the innovation of an **electric suitcase**, navigating the airport becomes faster and more comfortable. Investing in a high-quality airport suitcase is an investment in a smoother, more enjoyable travel experience that aligns perfectly with today's fast-paced travel environment.